

LINCRUSTA®

The Ultimate Wallcovering Since 1877

PRESS RELEASE - TRELLIS LAUNCH - SS23

www.lincrusta.com



Modern geometry meets 18th Century design; 'Trellis', new for SS23, is an incredibly versatile pattern, inspired by the intricately glazed doors of London's most revered furniture-makers. A future classic in the making.

'Trellis' is inspired by the great 18th century British furniture makers - Thomas Chippendale / Thomas Sheraton / George Hepplewhite. All these famous designers worked in London and were highly influenced by the trend for Chinoiserie, a style which has rarely come out of fashion for the last 300 years. Among the wealth of furniture designs they produced they were renowned for their stylish and intricate glazed cabinet doors.

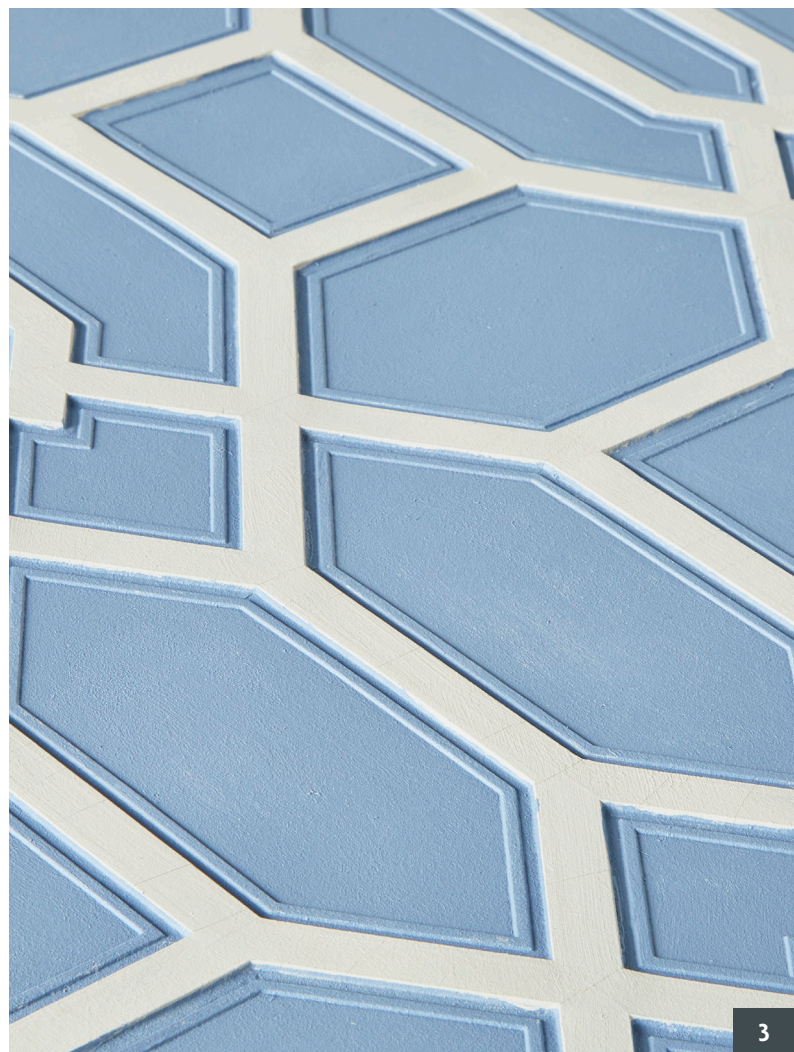
This lattice work pattern is also reminiscent of architectural structures found in gardens to support or display foliage. In our ongoing desire to bring the outdoors inside to our interior spaces 'Trellis' works well in combination with the company's foliage designs 'Palm' and 'Tropical Leaf'.

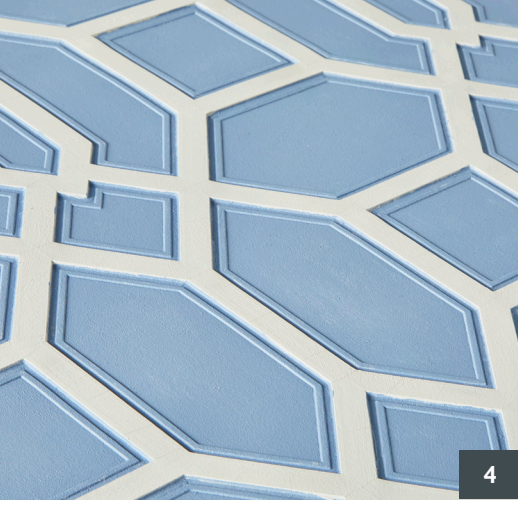
Acknowledging that Lincrusta is equally at home in both residential and hospitality settings, the Lincrusta team appointed creative director Amy Heffernan to create two moods. The 'Garden Room' colour palette embodies a fresh interpretation of the hues found in 18th Century interiors, the contemporary cabinet is a nod to the patterns' original inspiration. The gloss lacquer highlight on the monotone walls add a subtle glamour to the 'Bar Scene', which also showcases another Lincrusta pattern 'Cordage' on the bar structure.

With thanks to Amy Heffernan for wonderful image creation and Mylands for their fabulous paints.

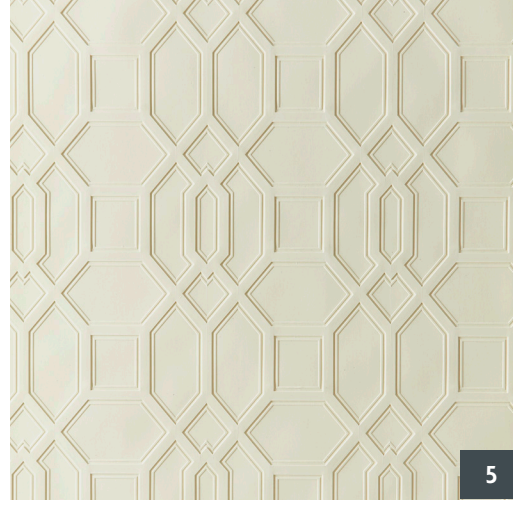
Editor's Note on Lincrusta:

Lincrusta is a natural wallcovering, made in the UK from Linseed oil, using the same time-honoured traditions and craftsmanship as when it was invented by Frederick Walton in 1877. With an unrivalled emboss, it is delivered in its natural colour and as such is a textural blank canvas to be painted in any colour or with paint effects to suit the room. Each project is unique. A versatile product it can be used on a myriad of surfaces: walls, ceilings, furniture, bars, headboards, to name a few.

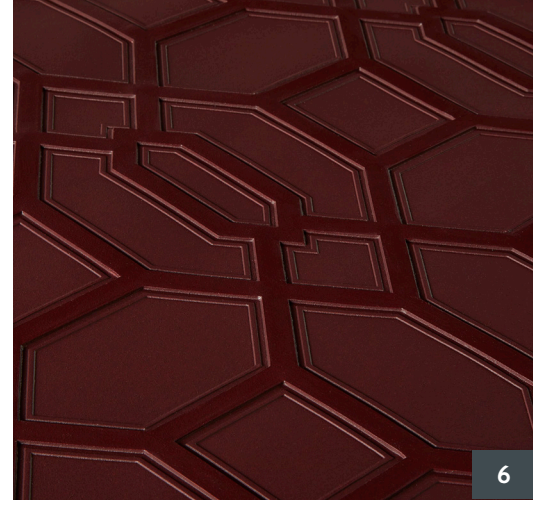




4



5



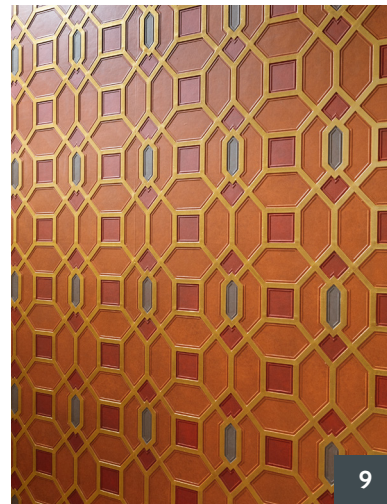
6



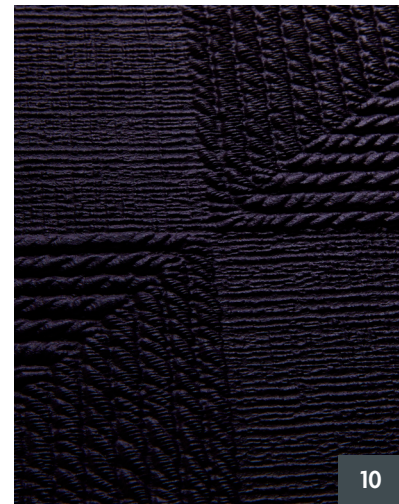
7



8



9



10

Front Cover

Walls: Wallcovering Lincrusta Trellis – RD1979FR
Paint: Ground colour: Mylands' Rothschild Street, Detail: gloss lacquer

Inside Front Cover

Walls: Wallcovering Lincrusta Trellis – RD1979FR
Paint: Ground colour: Mylands' Rothschild Street, Detail: gloss lacquer
Bar: Lincrusta Cordage – RD1860FR
Paint: Mylands' Duke's House

Image No. 1, 2, 3 & 4

Walls: Wallcovering; Lincrusta Trellis – RD1979FR
Paint: Ground colour: Mylands' Boathouse, Detail: Mylands' Islington
Paint: Ground Colour: Mylands' Islington, Detail: Mylands' Wharf Slacking

Image No. 5:

Lincrusta Trellis – RD1979FR

Image No. 6:

Lincrusta Trellis – RD1979FR
In Mylands' Rothschild Street

Image No. 7:

Lincrusta Trellis – RD1979FR
Bespoke paint finish Duval & Mauler

Image No. 8:

Lincrusta Palm – RD1978FR
In Mylands' Islington & Wharf Slacking

Image No. 9:

Lincrusta Trellis – RD1979FR
Bespoke paint finish Duval & Mauler

Image No.10:

Lincrusta Cordage – RD1860FR
In Mylands' Rothschild Street

Back cover:

Walls: Wallcovering; Lincrusta Trellis – RD1979FR
Paint: Ground colour: Mylands' Boathouse, Detail: Mylands' Islington
Ceiling: Wallcovering; Lincrusta Palm – RD1978FR
Paint: Ground Colour: Mylands' Islington, Detail: Mylands' Wharf Slacking



LINCRUSTA®

Lincrusta showroom, First Floor Design Centre East, Chelsea Harbour, Lots Road, London, SW10 0XE.